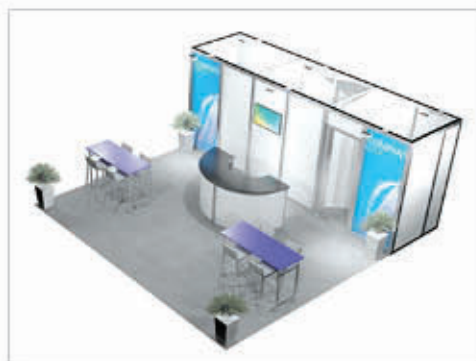


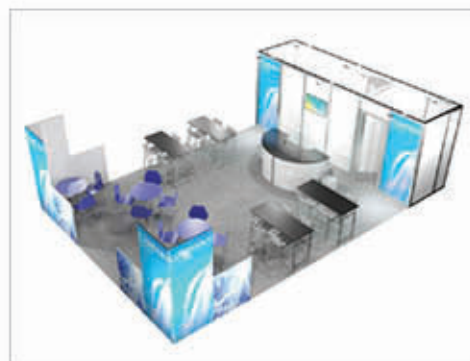
# Custom Stand Options

Please contact your sales' representative for more information, alternatively you can call +61 2 9452 7575 or email [info@expertiseevents.com.au](mailto:info@expertiseevents.com.au)

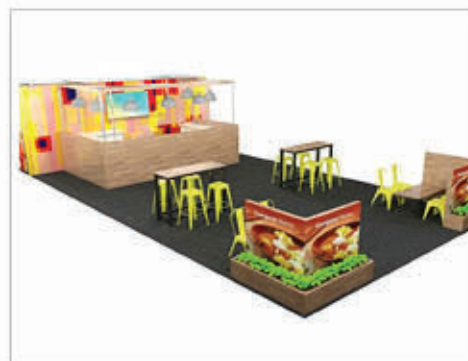
*Expertise*  
events



**Option 1:** Peninsular Concierge (36)



**Option 2:** Peninsular Concierge (54)



**Option 3:** Peninsular Hospitality (72)



**Option 4:** Peninsular Hospitality (108)



**Option 5:** Peninsular Meeting (72)



**Option 6:** Peninsular Meeting (108)



**Option 7:** Peninsular Reception (36)



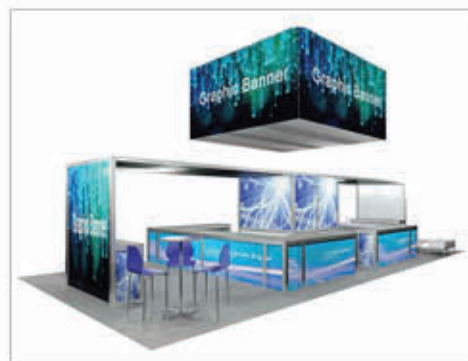
**Option 8:** Peninsular Reception (54)



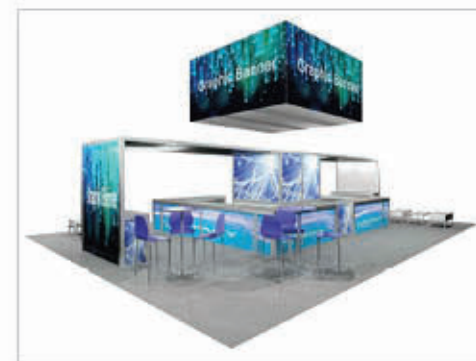
**Option 9:** Island Concierge Open (72)



**Option 10:** Island Concierge with Banners (108)

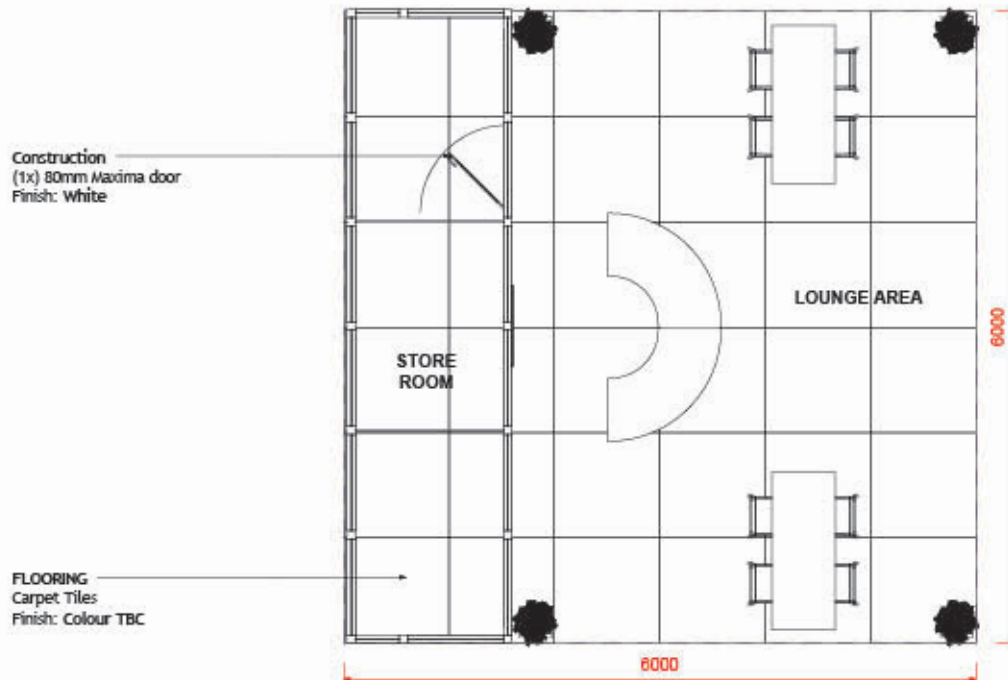


**Option 11:** Island Hospitality HiViz (72)



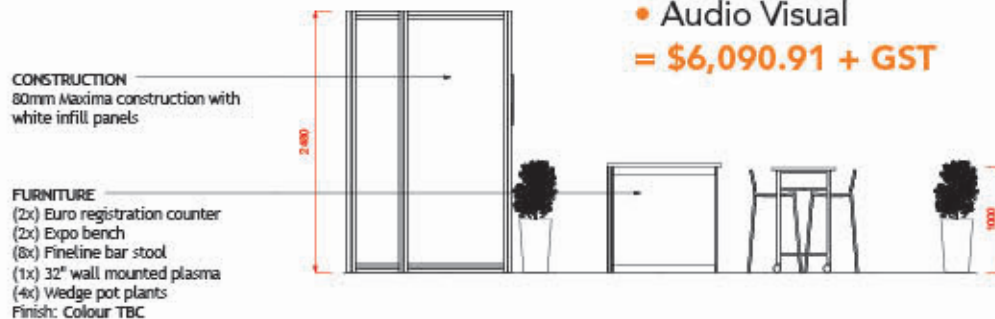
**Option 12:** Island Hospitality HiViz (108)

## Option 1: Peninsular Concierge (36)

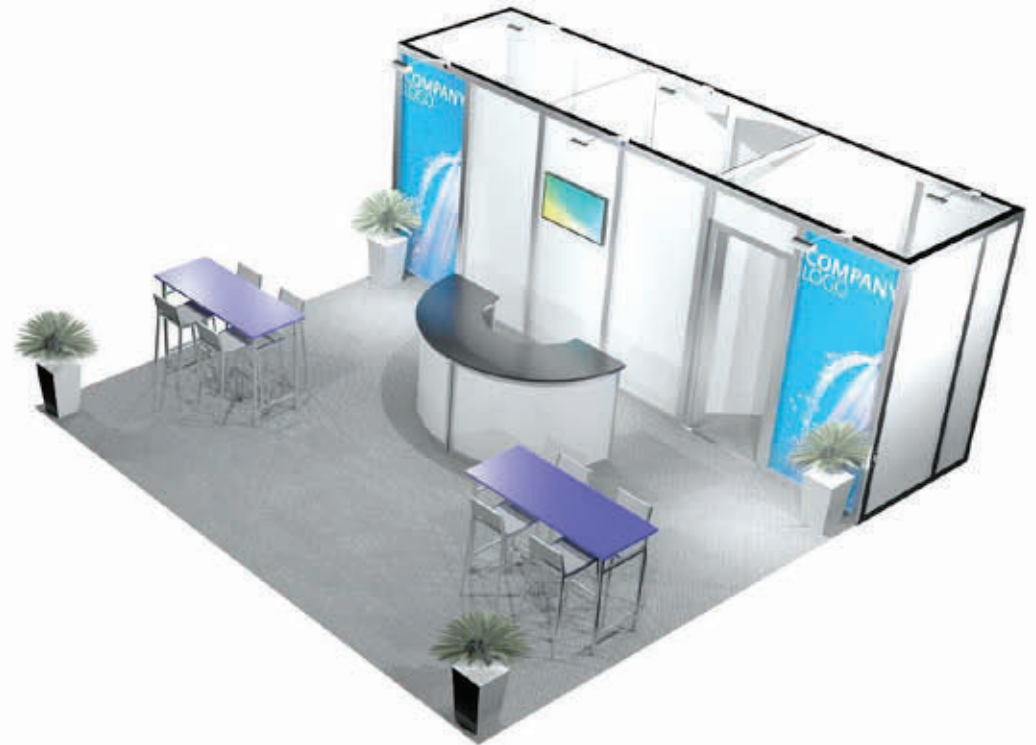


floorplan

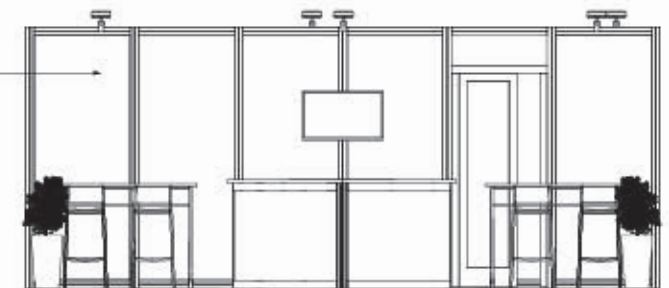
- Structure including carpet
  - Furniture
  - Electrical
  - Signage
  - Audio Visual
- = \$6,090.91 + GST**



frontelevation

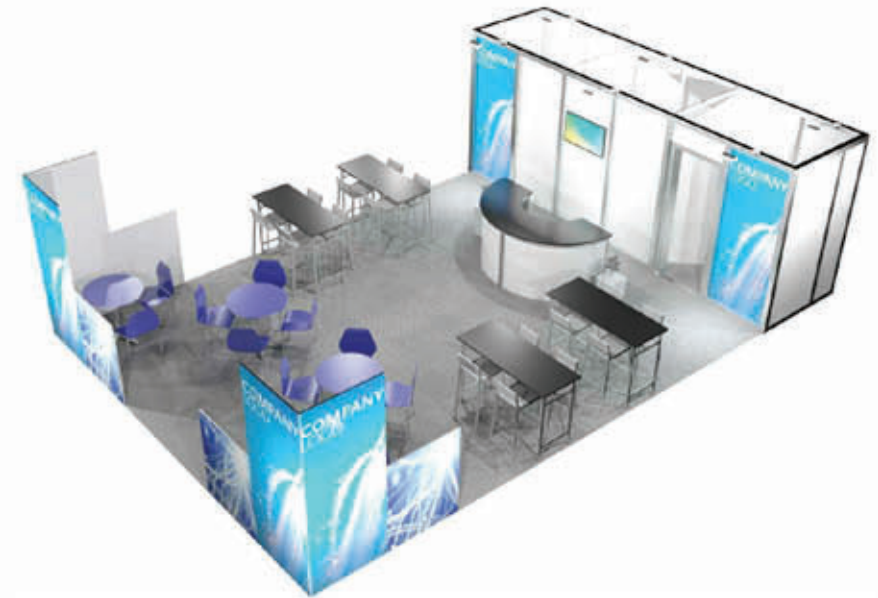
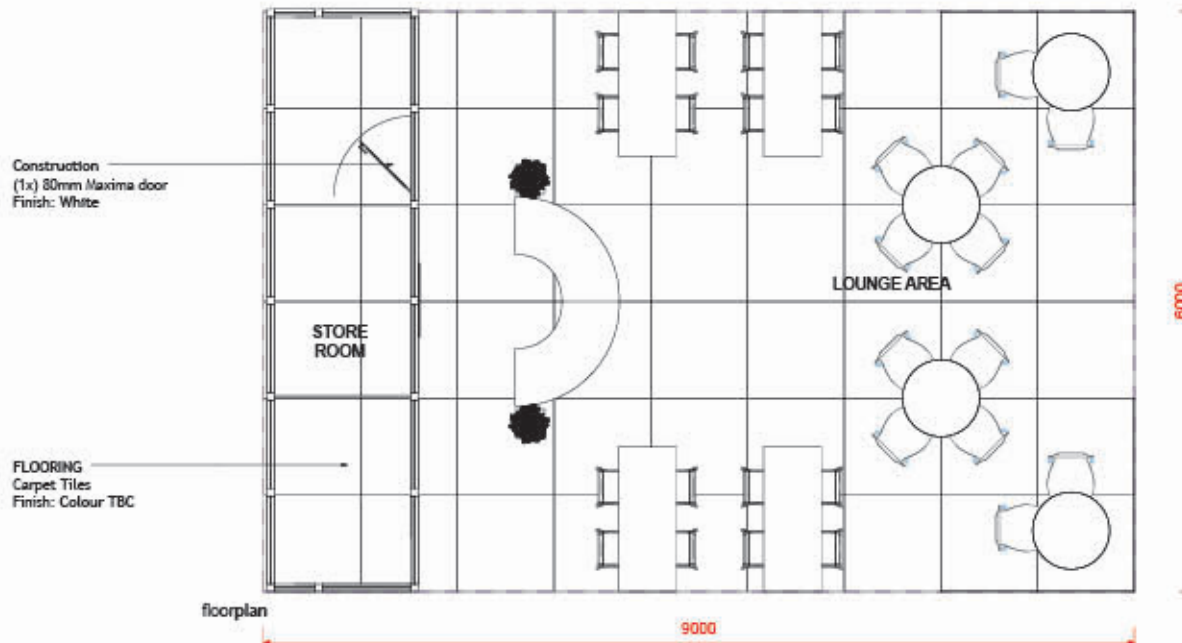


SIGNAGE  
(2x) Digital print simona infills  
Finish: Digital Print

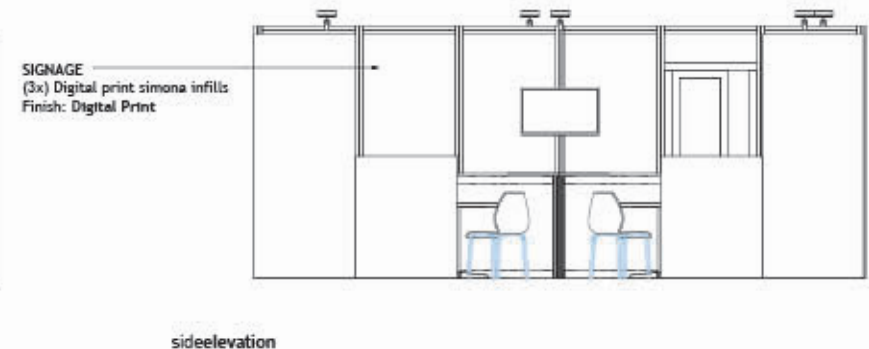


sideelevation

## Option 2: Peninsular Concierge (54)

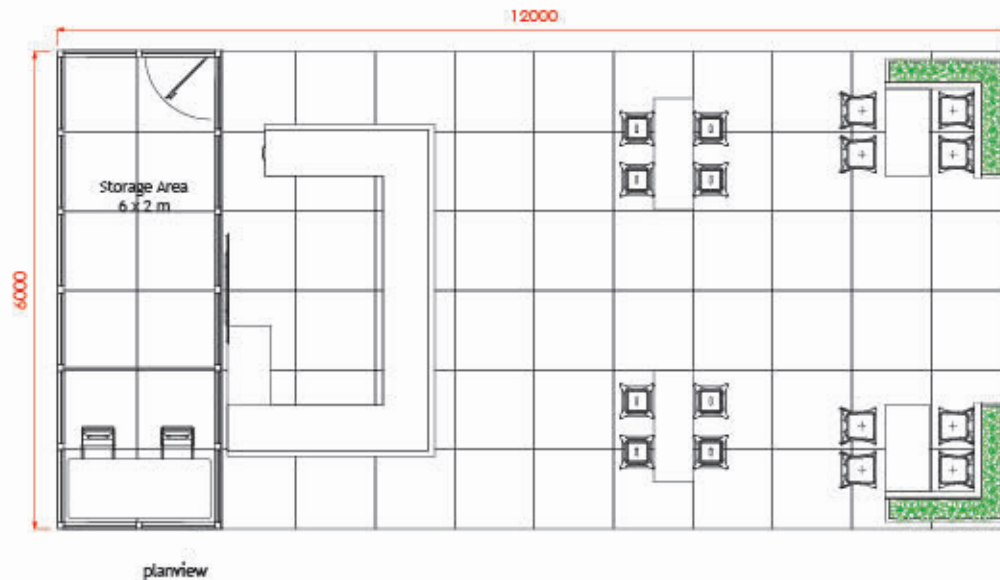


- Structure including carpet
  - Furniture
  - Electrical
  - Signage
  - Audio Visual
- = \$9,900 + GST**

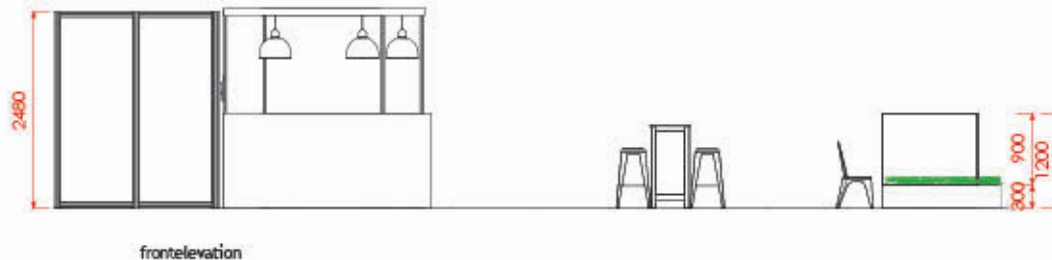




## Option 3: Peninsular Hospitality (72)



- Structure including carpet
  - Furniture
  - Electrical
  - Signage
  - Audio Visual
- = \$9,863.64 + GST**



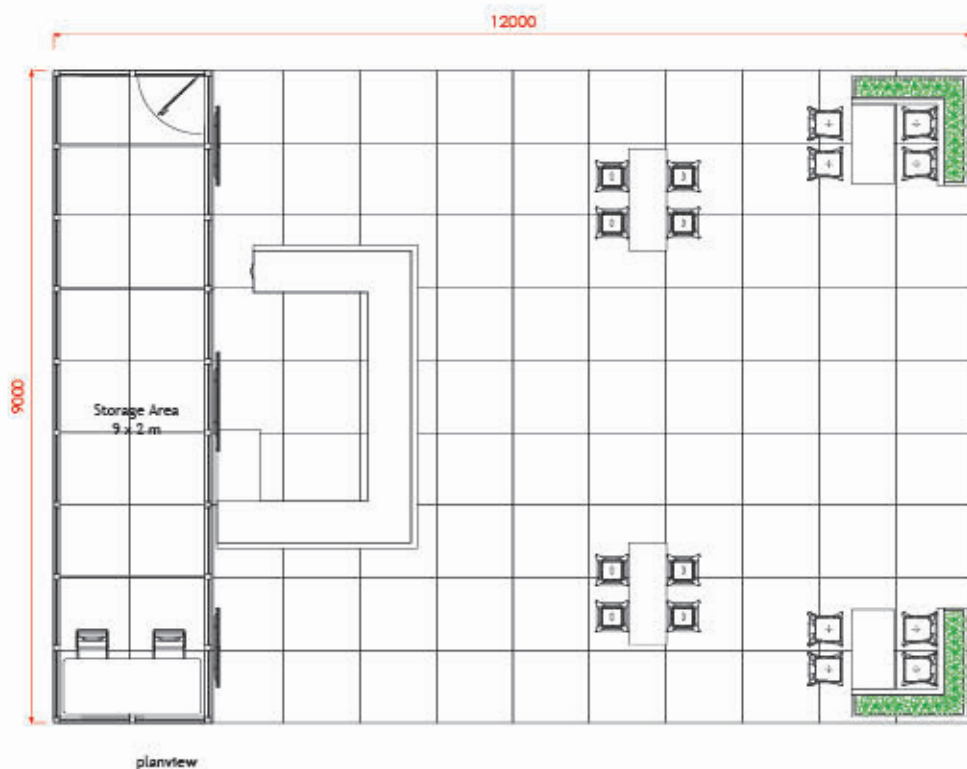
**General Walling | Storage area**  
80mm Maxima system structure with printed PVC & white melamine infills, include lockable door access.

**Bar**  
Octanorm system structure with PVC infills, include doc under benchtop, 16mm Melamine Benchtop.  
8.0 lineal meters x 1200mmH, 80mmD raw timber structure in front of bar.  
Overhead 100mmH timber Pelmet, structure with octanorm post 2480mmH, include (6x) hanging lamps

**Corner Planter Box**  
(1x) 1500W x 1500D x 1200mmH, 80mmD raw timber structure. with a 300mmD planter box area and Digital Print on front faces.



## Option 4: Peninsular Hospitality (108)



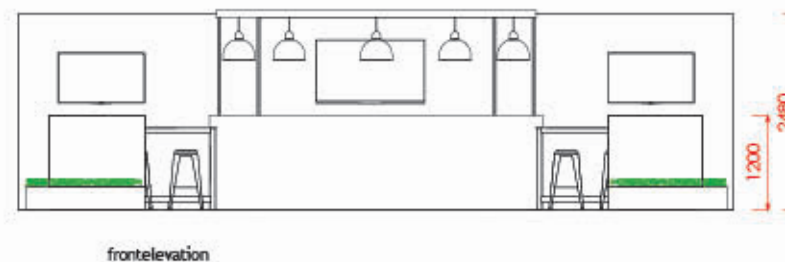
- Structure including carpet
  - Furniture
  - Electrical
  - Signage
  - Audio Visual
- = 11,484.41 + GST**



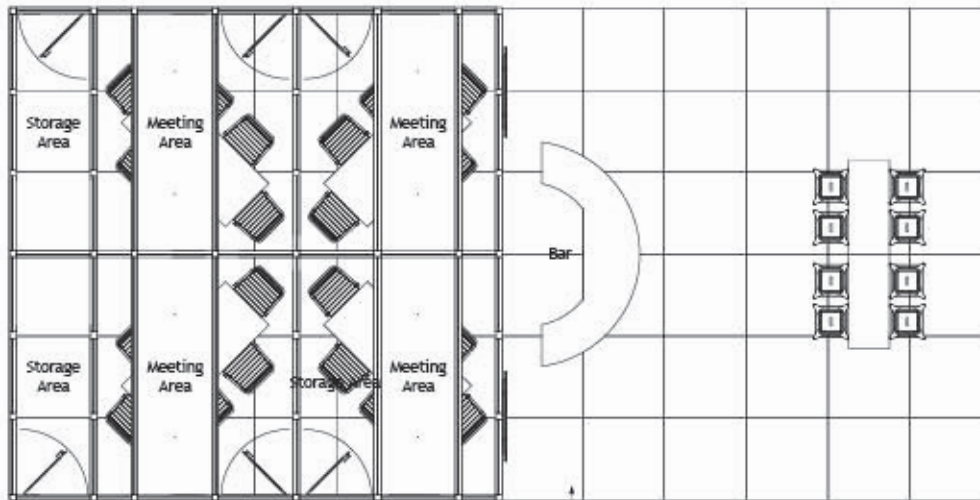
**General Walling | Storage area**  
80mm Maxima system structure with printed PVC & white melamine infills. Include lockable door access.

**Bar**  
Octanorm system structure with PVC infills, include doc under benchtop, 16mm Melamine Benchtop.  
8.0 lineal meters x 1200mmH, 80mmD raw timber structure in front of bar.  
Overhead 100mmH timber Pelmet, structure with octanorm post 2480mmH, include (6x) hanging lamps

**Corner Planter Box**  
(1x) 1500W x 1500D x 1200mmH, 80mmD raw timber structure, with a 300mmD planter box area and Digital Print on front faces.



## Option 5: Peninsular Meeting (72)

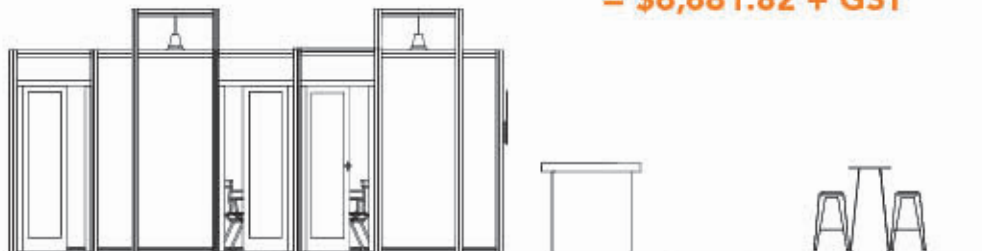


planview

Floor  
(1x) 12000W X 6000D, Hired carpet Tiles



- Structure including carpet
  - Furniture
  - Electrical
  - Signage
  - Audio Visual
- = \$6,681.82 + GST**



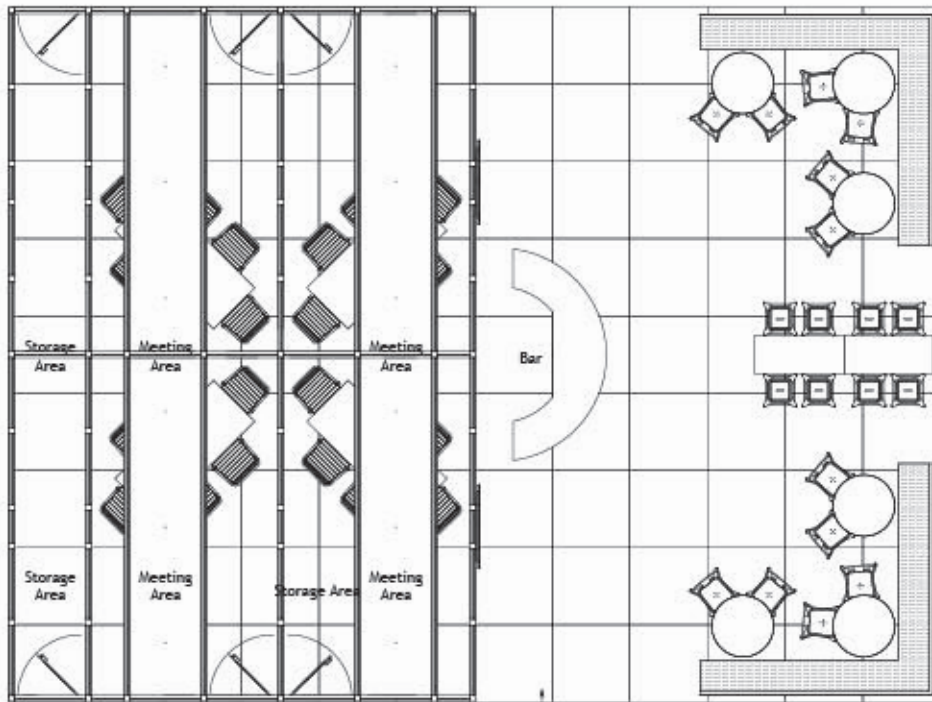
frontelevation



frontelevation



## Option 6: Peninsular Meeting (108)



planview

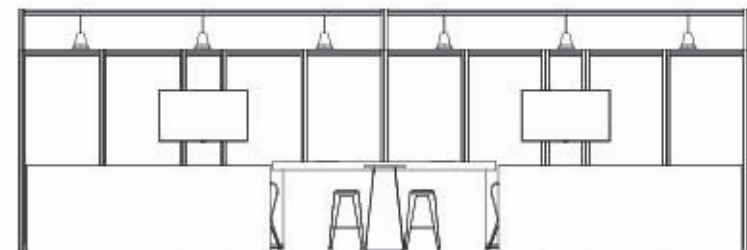
Floor  
(1x) 12000W X 6000D, Hired carpet Tiles



- Structure including carpet
  - Furniture
  - Electrical
  - Signage
  - Audio Visual
- = \$8,227.28 + GST**

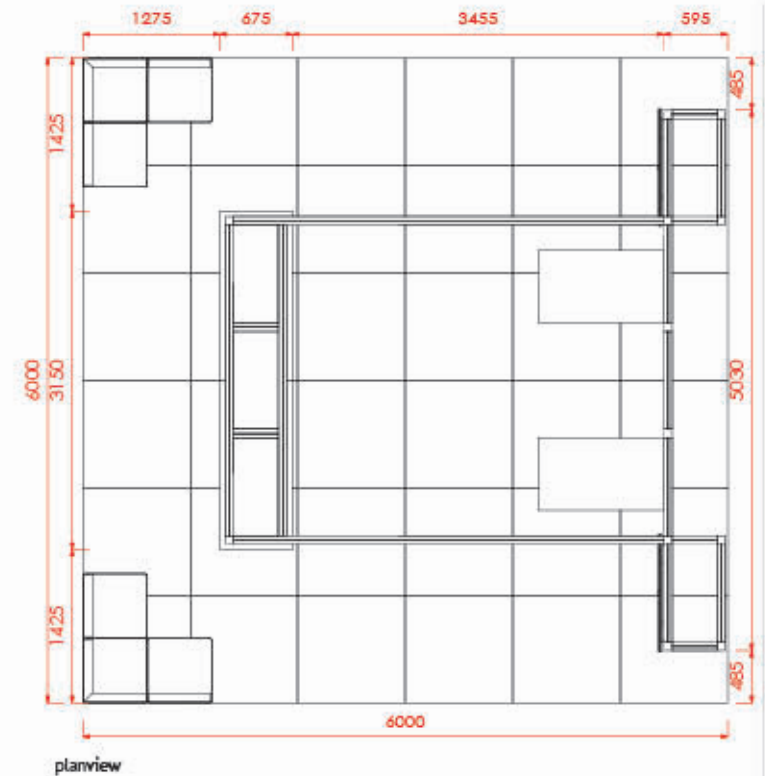
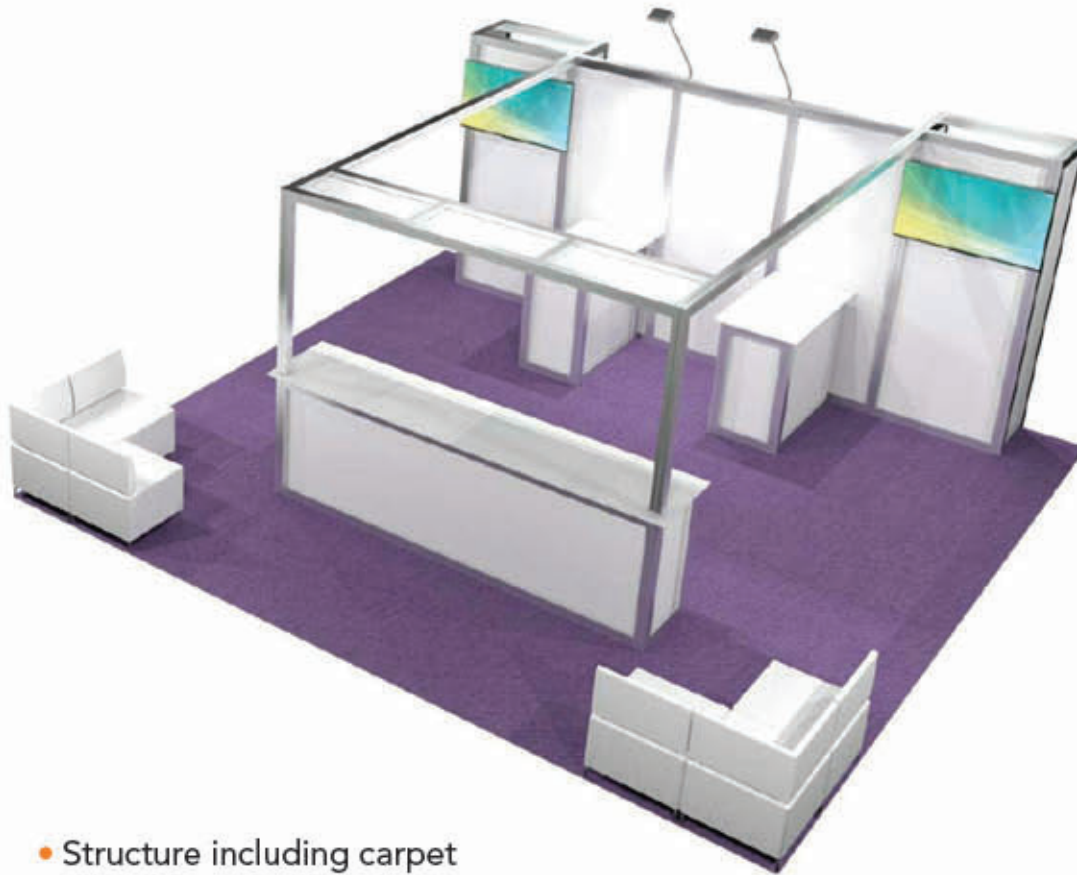


frontelevation

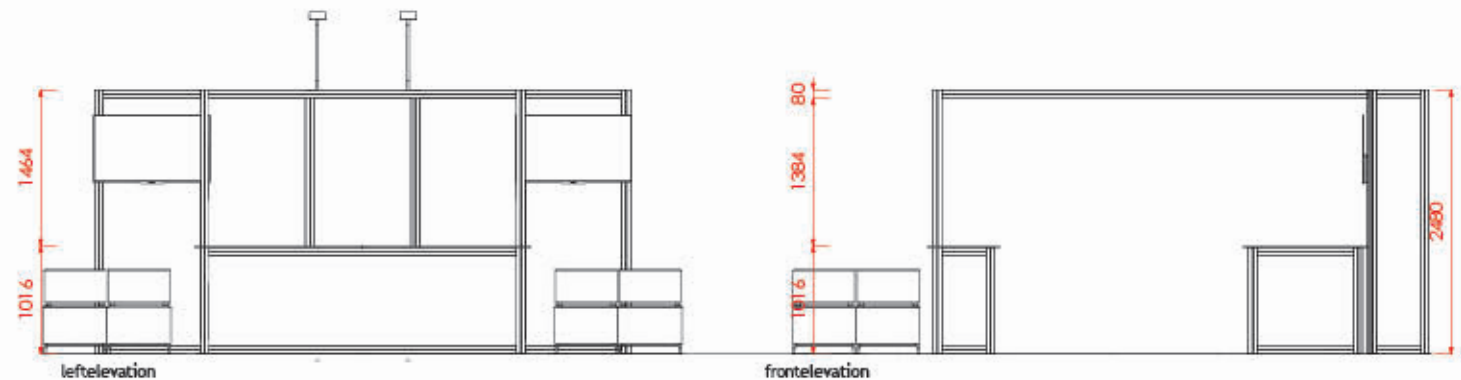


frontelevation

## Option 7: Peninsular Reception (36)

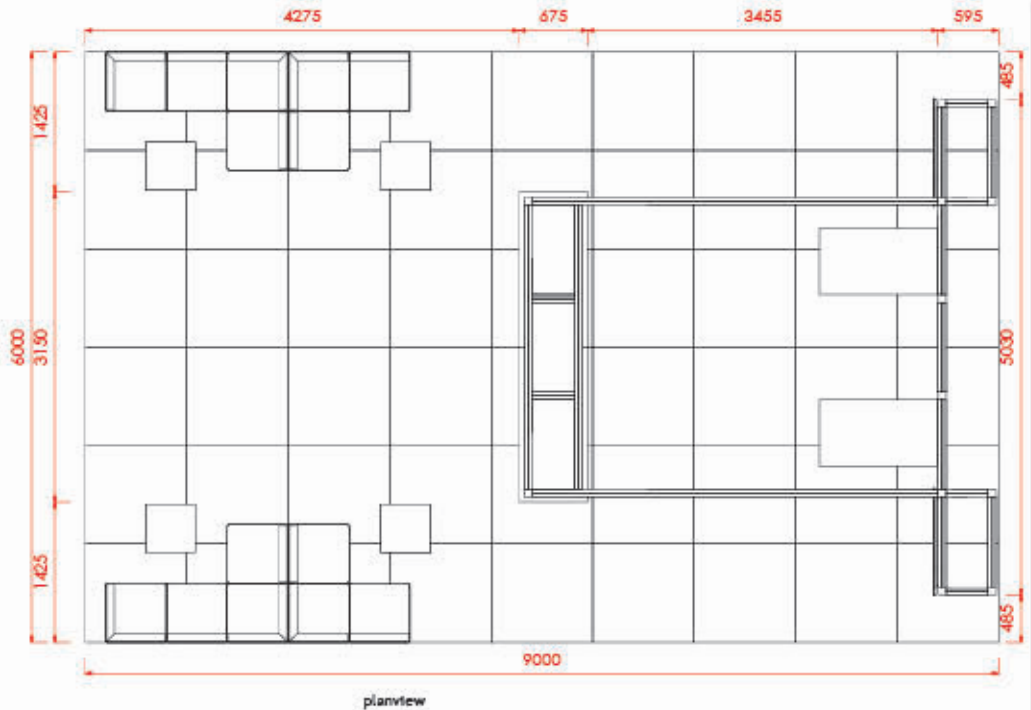
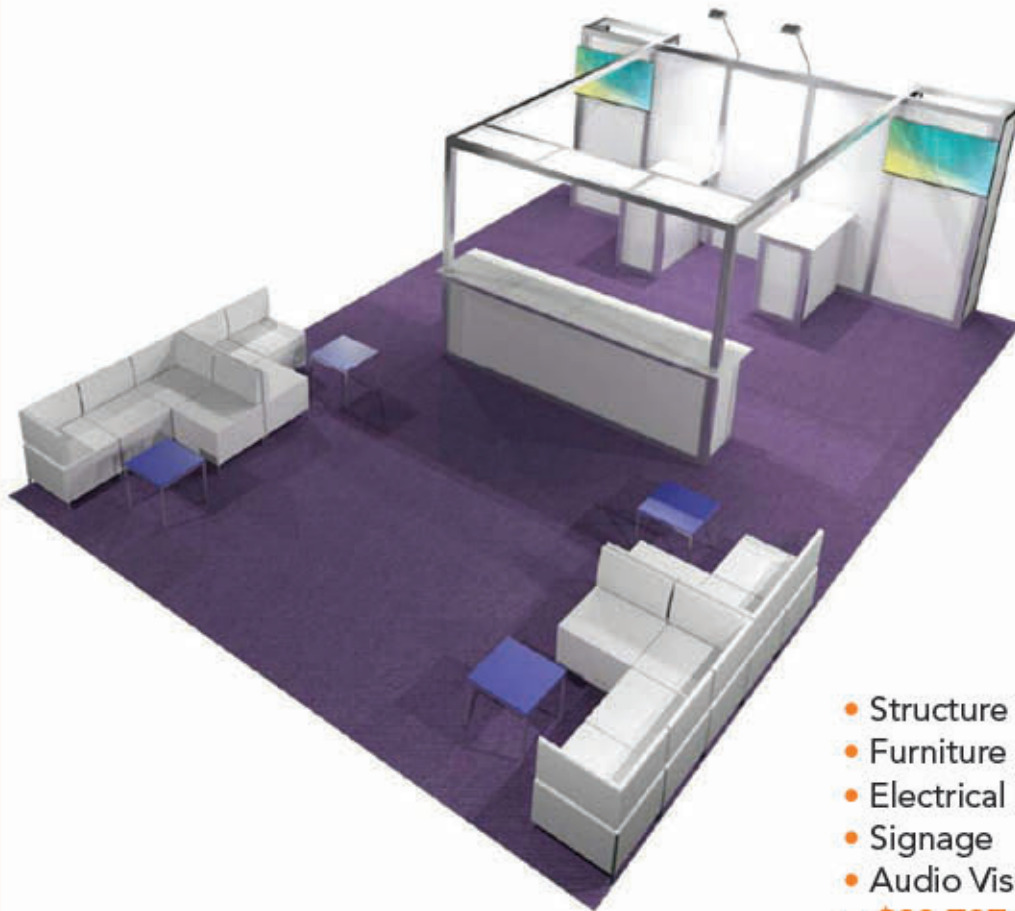


- Structure including carpet
  - Furniture
  - Electrical
  - Signage
  - Audio Visual
- = \$19,818.18 + GST**

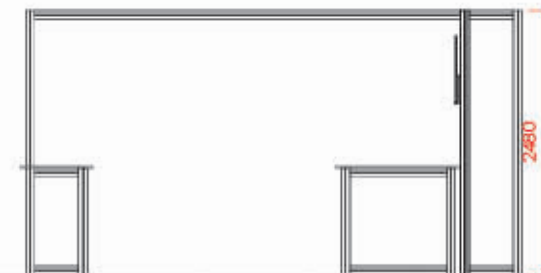
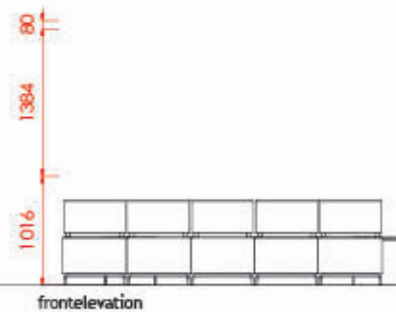
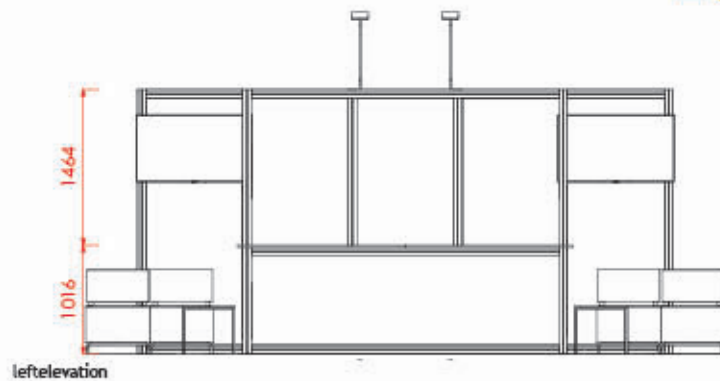




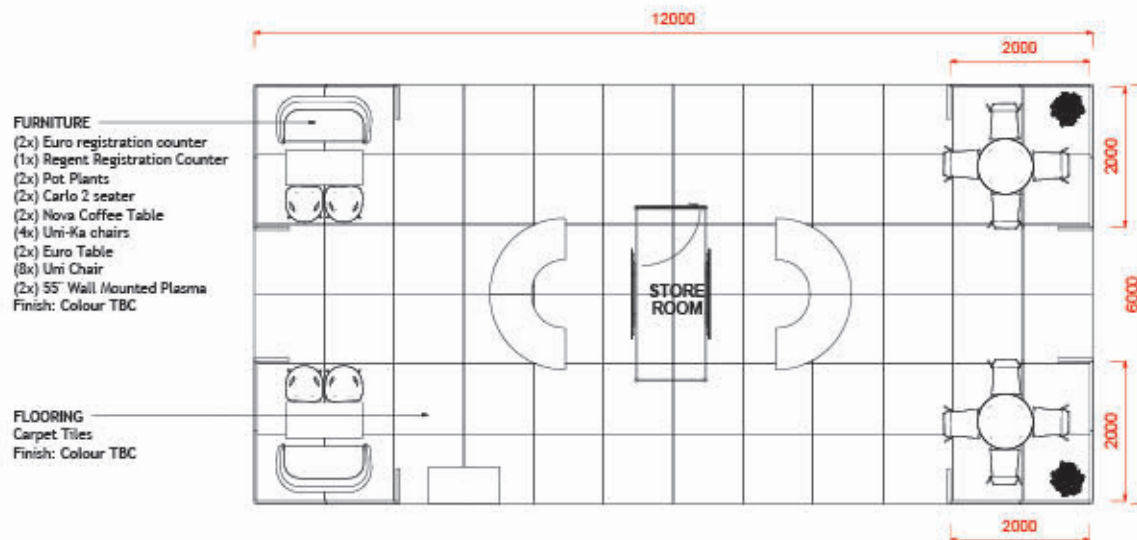
## Option 8: Peninsular Reception (54)



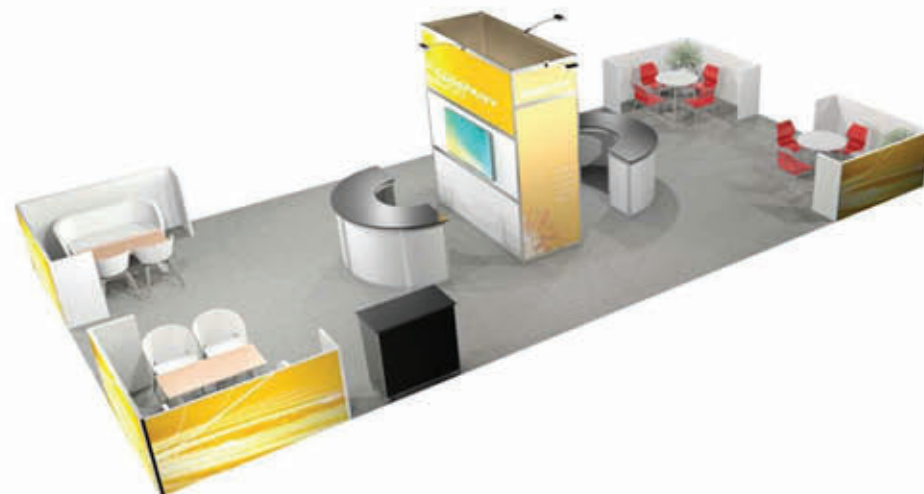
- Structure including carpet
  - Furniture
  - Electrical
  - Signage
  - Audio Visual
- = \$20,727.27 + GST**



## Option 9: Island Concierge Open (72)



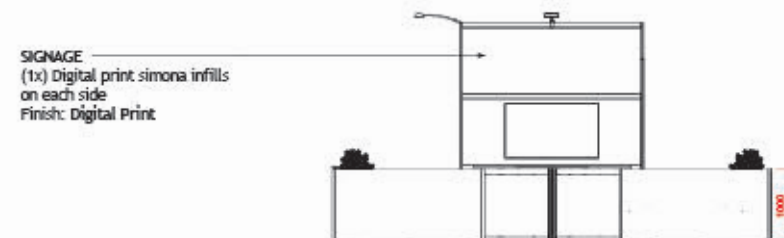
floorplan



- Structure including carpet
  - Furniture
  - Electrical
  - Signage
  - Audio Visual
- = \$19,000 + GST**

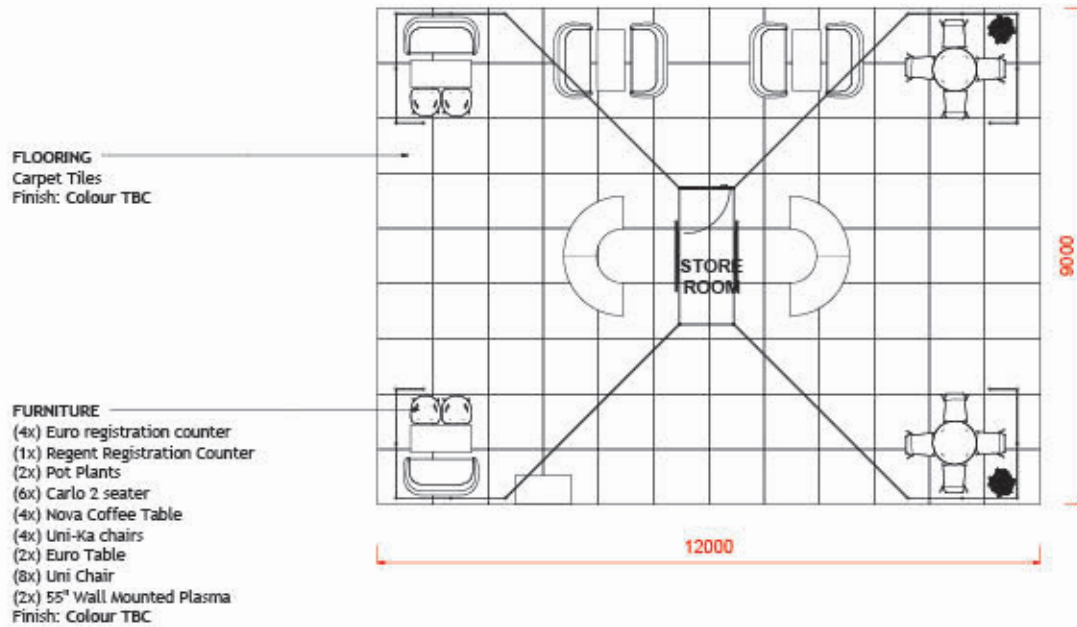


frontelevation



sideelevation

## Option 10: Island Concierge with Banners (108)



floorplan

- Structure including carpet
  - Furniture
  - Electrical
  - Signage
  - Audio Visual
- = \$25,727.27 + GST**



**SIGNAGE**  
(4x) Digital print simona infills fascias  
Finish: Digital Print

**CONSTRUCTION**  
Octanorm construction with white infill panels



frontelevation

**SIGNAGE**  
(1x) Digital print simona infills on each side  
Finish: Digital Print

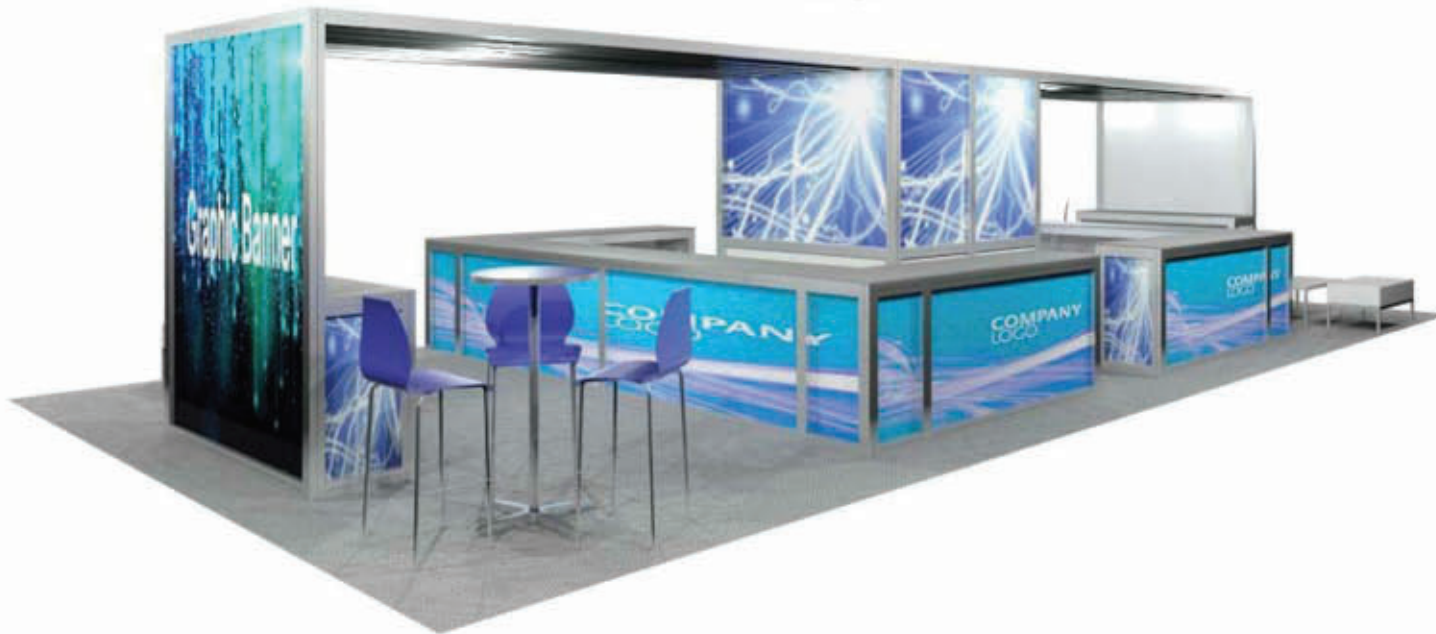
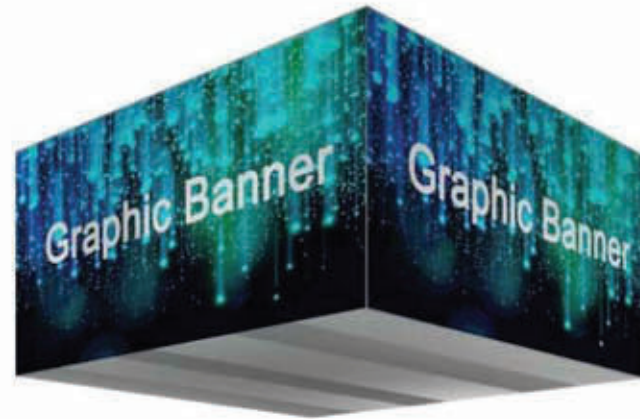


sideelevation

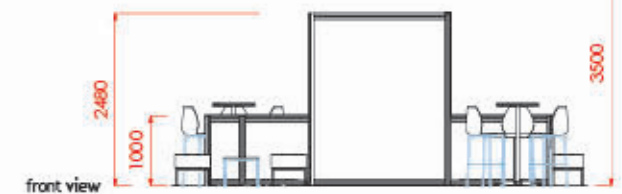
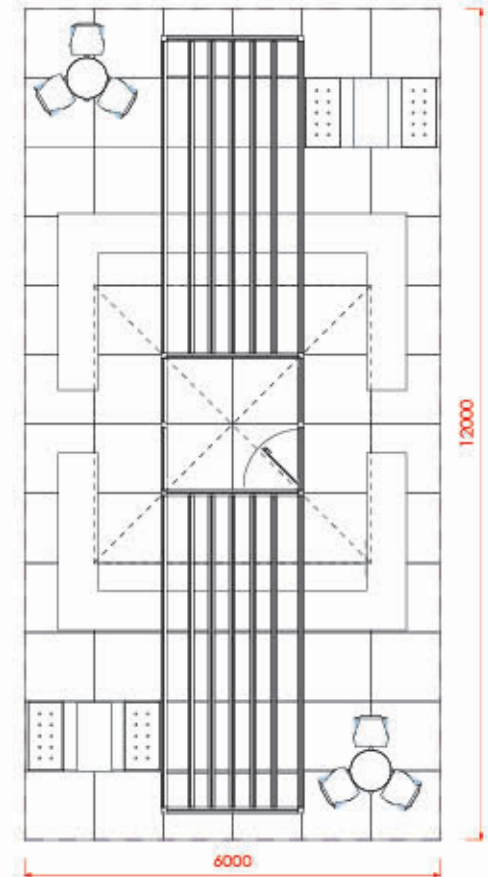


## Option 11: Island Hospitality HiViz (72)

- Structure including carpet
  - Furniture
  - Electrical
  - Signage
  - Audio Visual
- = \$24,909.09 + GST**



perspective view



## Option 12: Island Hospitality HiViz (108)

- Structure including carpet
  - Furniture
  - Electrical
  - Signage
  - Audio Visual
- = \$34,454.55 + GST**

